



Kristinn Ragnarsson arkitekt ehf.

KRark creates integrated and profitable spaces

Krark ehf. is an architectural design studio specialized in building design and urban planning. The office was founded in Iceland in 1980 by Kristinn Ragnarsson, after working for some years both in Iceland and in Germany, where received the Dipl. Eng. Architect degree from the Carolo Wilhelmina Technical University in Braunschweig in 1973.

Profile

Krark has been involved in a wide range of architectural design projects of different types and scales; from town planning, office, commercial, industrial, sports facilities, hotels, schools, apartment buildings, single family houses and interior design.

The work done by KRark emphasizes formal and functional integration between architecture, technique, budget and natural environment. It is recognized in Iceland for the quality of its projects, which use mainly contemporary architectural language and functionality.

KRark believes in the idea of teamwork throughout the design process. We involve the client, design team, engineering consultants, contractor and suppliers in the whole process to have a good exchange of information and feedback to reach a solution that meets the client's expectations and the needs of the market.

Through this process we have achieved a balance between form, function, technique, environment, context, cost, profitability in the market and most of all, client's satisfaction.



Our Resources

Krark has experienced a continuous growth during the last 7 years. Our work has been enriched with employees from different nationalities and backgrounds. Our working system stays up to date through continuous training and cutting-edge tools.

Since 2008 we started the transition from the traditional CAD platform to Building Information Modeling (BIM) system implementation through Revit Architecture. The process of communication with the different teams involved became much more efficient, giving the possibility to use the data to analyze the model during the design process in order to create a green and sustainable building.

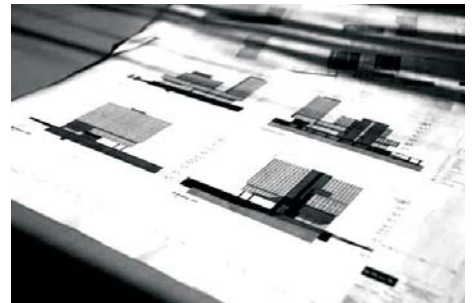
BIM is an integrated process built on coordinated, reliable information about a project from design through construction and into operations.

Portfolio

KRark has developed a wide range of architectural design and has been involved in projects of different types and scales from town planning, office-, commercial- & industrial buildings, sports facilities, hotels, schools, apartment buildings, single family houses and interior design.

KRark has been recognized with awards in Design by the City of Reykjavik in 2002, and the City of Kopavogur in 2003, 2005 and 2006.

Due to the various backgrounds and experience of the collaborators at Kristinn Ragnarsson arkitekt ehf, we offer a broad spectrum of services, both in the planning stage, as during the construction stage of a project.



List of projects per year

Year:	2004
Staff:	11
Total number of Projects:	130
Family houses:	70
Twin houses:	4
Houses in row:	3
Apartment buildings:	43
Comercial buildings:	2
Office buildings:	2
Industrial buildings:	4
Urban planning:	2

Year:	2007
Staff:	19
Total number of Projects:	100
Family houses:	43
Twin houses:	17
Houses in row:	12
Apartment buildings:	10
Comercial buildings:	6
Office buildings:	1
Industrial buildings:	3
Sports facilities:	1
Urban planning:	7

Year:	2005
Staff:	17
Total number of Projects:	130
Family houses:	70
Twin houses:	8
Houses in row:	8
Apartment buildings:	23
Comercial buildings:	6
Office buildings:	4
Industrial buildings:	6
Sports facilities:	1
Urban planning:	4

Year:	2008
Staff:	19
Total number of Projects:	100
Family houses:	27
Twin houses:	1
Houses in row:	2
Apartment buildings:	17
Comercial buildings:	0
Office buildings:	0
Industrial buildings:	3
Schools:	1
Urban planning:	7

Year:	2006
Staff:	22
Total number of Projects:	130
Family houses:	61
Twin houses:	8
Houses in row:	15
Apartment buildings:	24
Comercial buildings:	3
Office buildings:	2
Industrial buildings:	6
Sports facilities:	2
Urban planning:	9

Year:	2009
Staff:	7
Total number of Projects:	23
Family houses:	10
Twin houses:	0
Houses in row:	0
Apartment buildings:	5
Comercial buildings:	1
Office buildings:	1
Industrial buildings:	1
Hotels:	2
Urban planning:	3

Dwelling / Summer houses



Dwelling / Single and Twin houses



Dwelling / Apartment Buildings



Project: Lækjargata 26-32
Location: Hafnarfjörður, Iceland
Floor area: 10.015 m²
Year of completion: 2005
Description:
 89 apartments for elderly people +50.



Project: Sóleyjarimi 1-7
Location: Reykjavík, Iceland
Floor area: 10.520 m²
Year of completion: 2005
Description:
 80 apartments for elderly people +50.



Project: Friggjarbrunnur 53
Location: Reykjavík, Iceland
Floor area: 6.850 m²
Year of completion: 2008
Description:
 61 apartments for elderly people +50 and services.

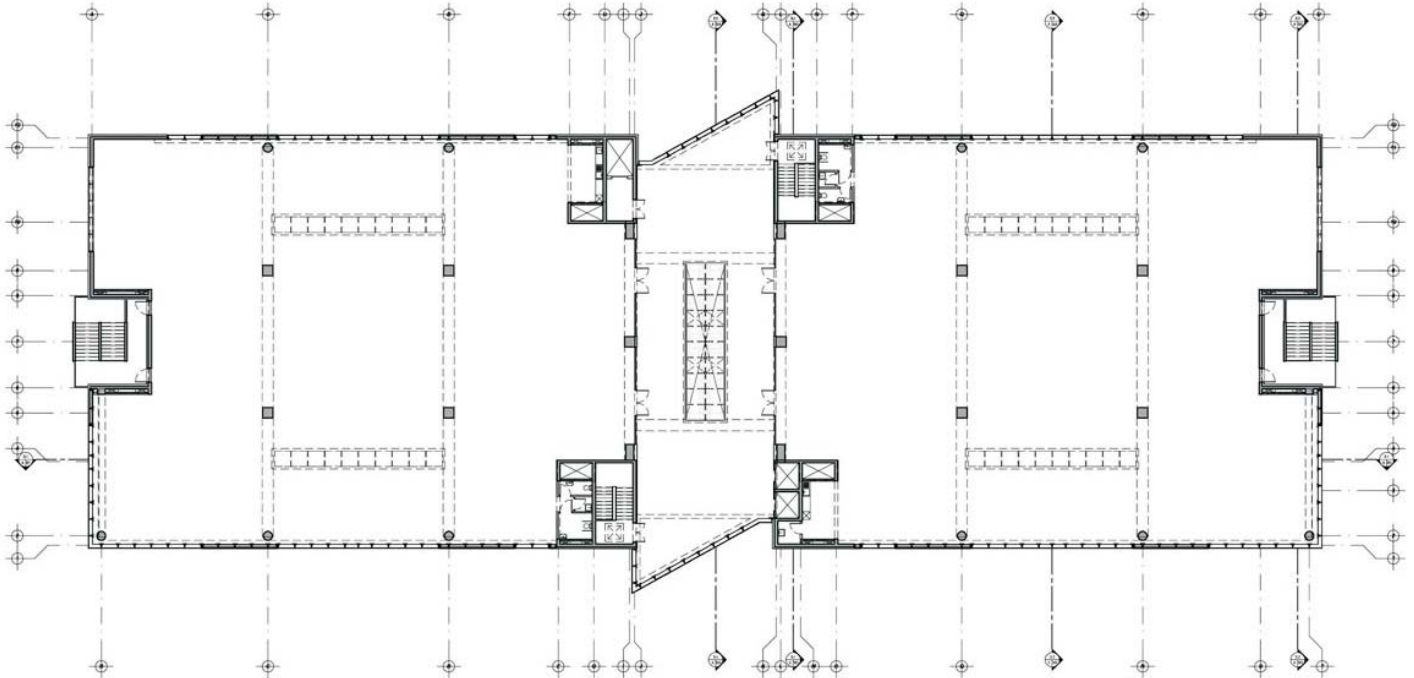
Dwelling / Apartment Buildings



Project: Arnaneshæð
Location: Garðabær, Iceland
Floor area: 42.540 m²
Year of completion: 2005-2008
Description:
254 dwelling units.
Twin houses, Houses in row and apartment buildings.



Working Spaces / Office Buildings



Project:
Skógarlind 1

Location:
Kópavogur, Iceland

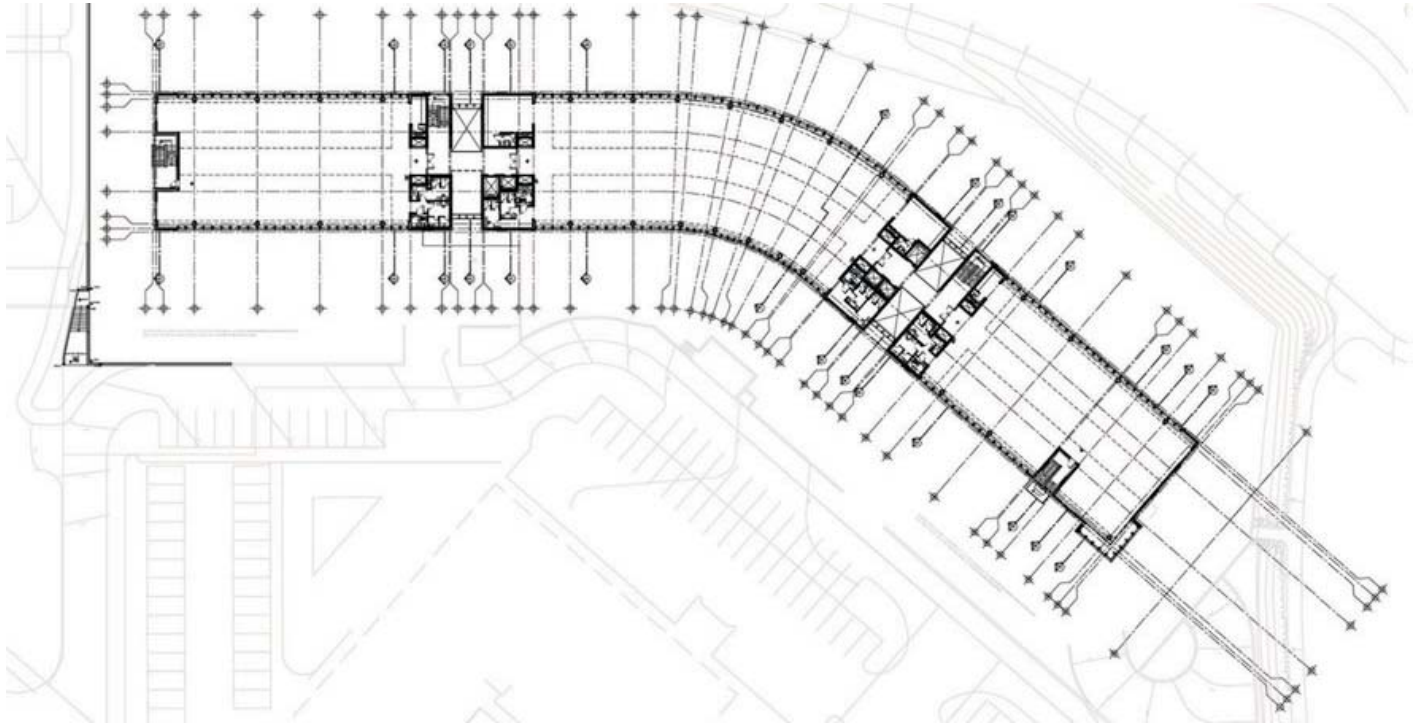
Floor area:
12.000 m²

Year of completion:
2005

Consultants:
Ágúst Birgisson Teiknistofa ehf
Lúmex ehf
Vsí ehf
Emil Þór Guðmundsson
Landslag ehf.

Description:
Commercial and office area building in four floors and two levels of parking area. The building is located in the business area of Kópavogur.

Working Spaces / Office Buildings



Project:
Urðarhvarf 8

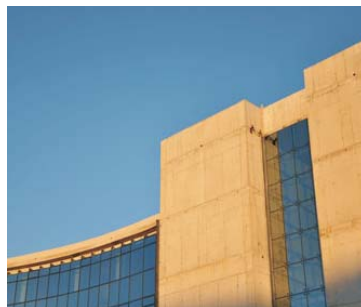
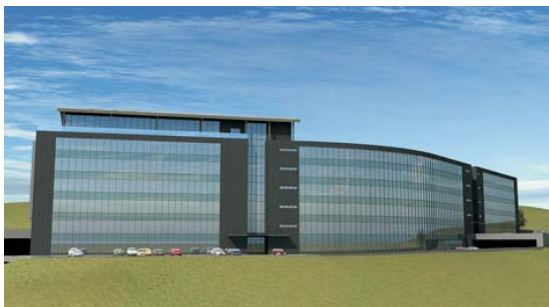
Location:
Kópavogur, Iceland

Floor area:
16.215 m²

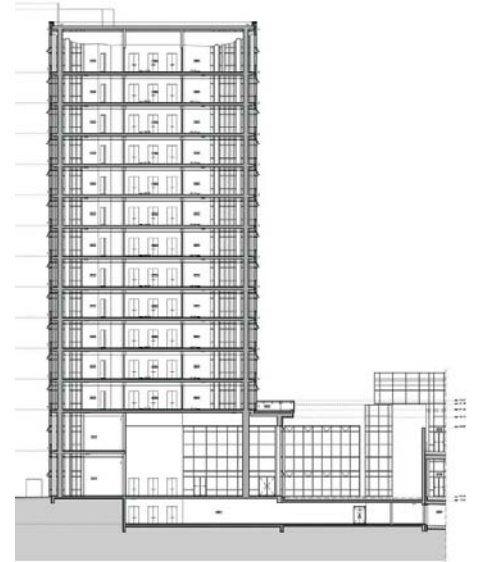
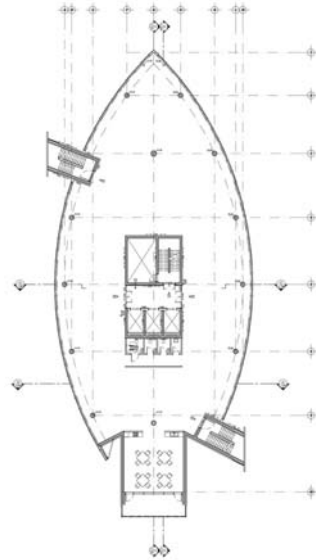
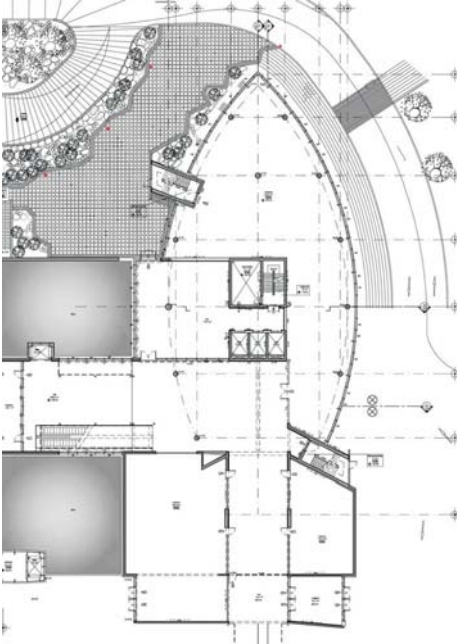
Year of completion:
2005

Consultants:
Private

Description:
Office and commercial area building divided in three parts according to the slopes in the land. One part with five floors, one with six and one with six and a pent house office area. There are two levels of underground parking adapted to the land as well.



Working Spaces / Office Buildings



Project:
Norðurturn við Smáralind

Location:
Kópavogur, Iceland

Floor area:
17,340m²

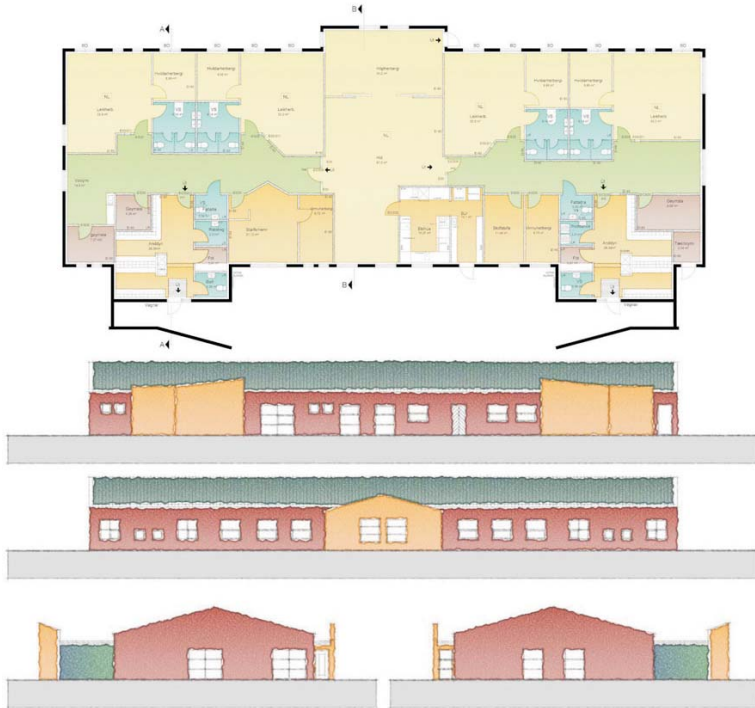
Year of completion:
2006

Consultants:
VSB Verkfræðistofa
Almenna Verkfræðistofan
VSI ehf
Ólafur I. Halldórsson
Landark ehf

Description:
15 level office and commercial area building connected to an existing shopping center. The program required separate entrances to both the upper office area and the commercial spaces; and an extension to the



Service Spaces / Play School



Project:
Play School in Reykjanes

Location:
Reykjanesbær, Iceland

Floor area:
660 m²

Year of completion:
1999

Consultants:
Private

Description:
New Play School for the Reykjanes area.
Four group building with service areas.



Project:
Austurkór 1 - Play School in Kópavogur

Location:
Kópavogur, Iceland

Floor area:
850 m²

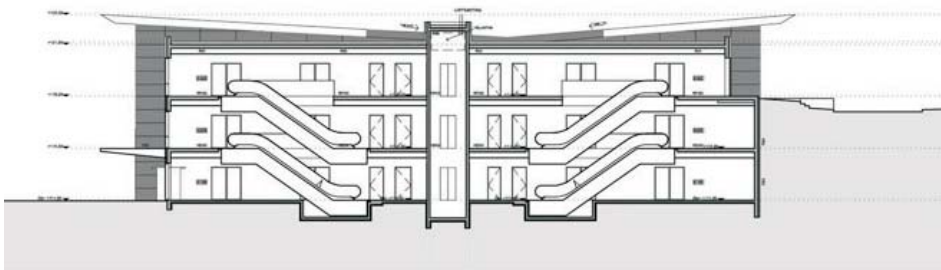
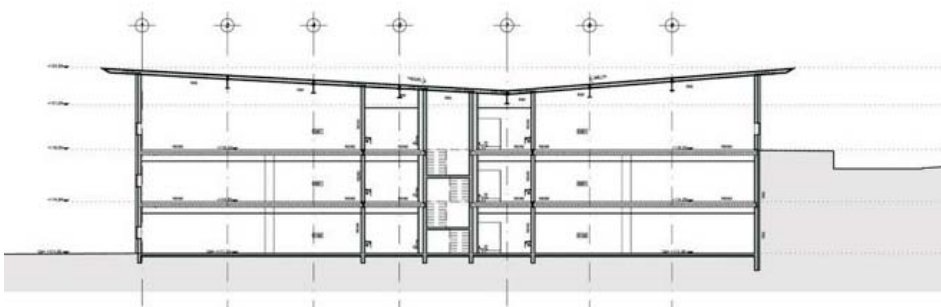
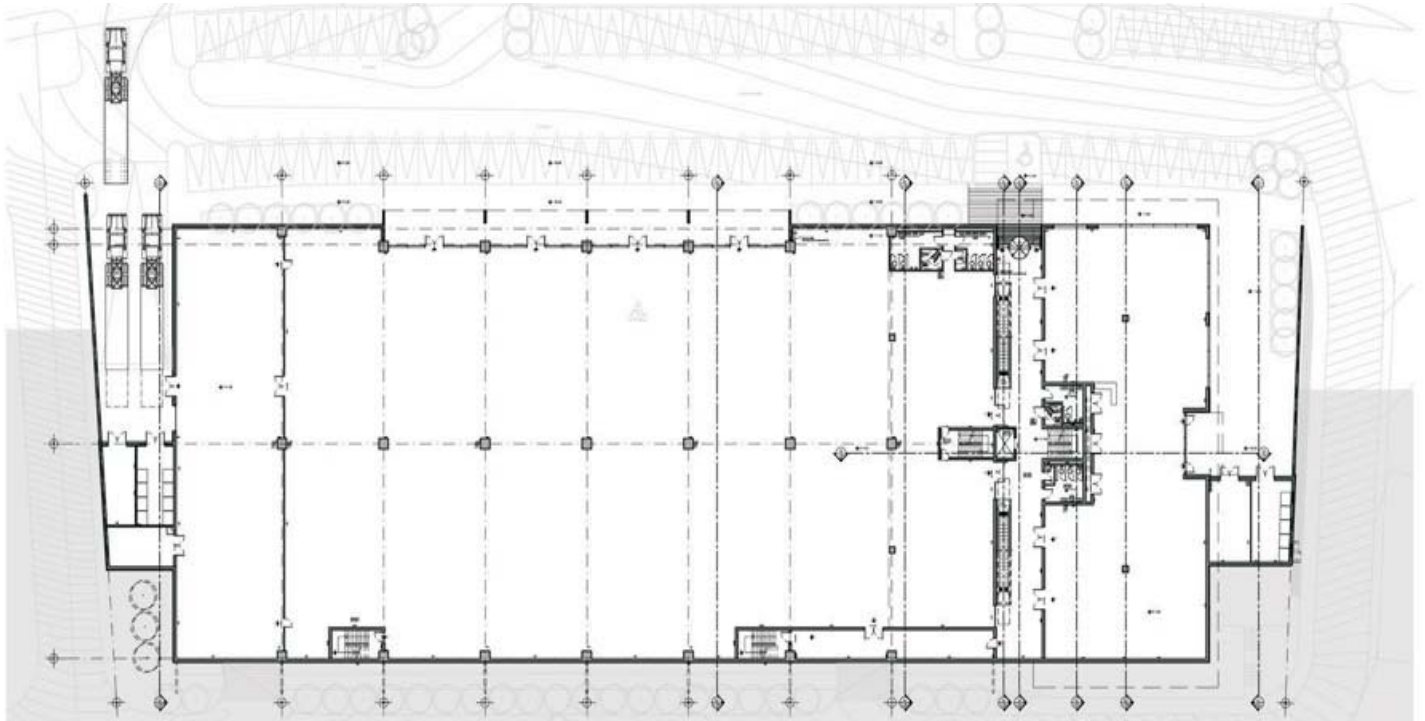
Year of completion:
2008

Consultants:
Private

Description:
Competition proposal for a new Play School
in the City of Kópavogur. Six group building
plus workshop and service areas. Landscape
design included.



Service Spaces / School



Project:
Vikurhvarf 1 - Film Academy of Iceland

Location:
Kópavogur, Iceland

Floor area:
7.350 m²

Year of completion:
2005

Consultants:
Private

